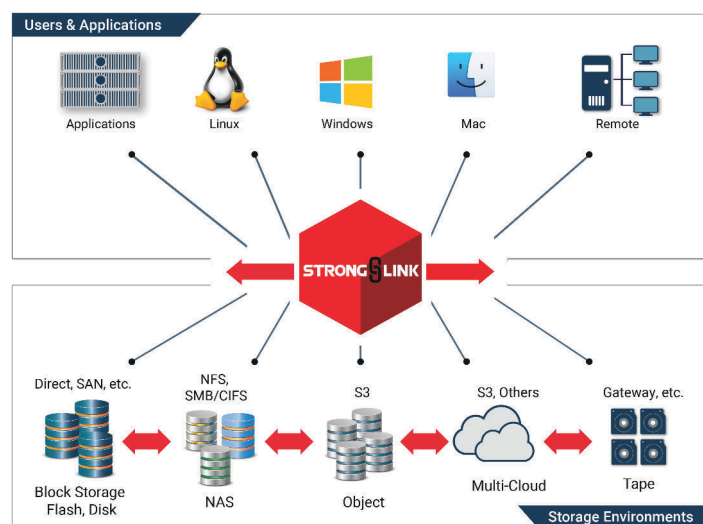


StrongLink is an intelligent software solution that provides IT organizations with policy-based data management automation across any storage type.

As a vendor-neutral software platform, StrongLink gives customers unprecedented insights into both their data and storage throughout the entire data lifecycle, and includes the tools to automate intelligent policy-based file actions across otherwise incompatible storage types, including flash, disk, cloud, and tape from any vendor.

Stronglink key benefits

- Vendor-neutral control of data lifecycles across any storage type.
- Reduce storage costs and operational complexity.
- Enforce global data protection and copy management.



StrongLink provides seamless multi-protocol access to manage data globally across otherwise incompatible storage silos.

StrongLink is the industry's leading software solution to simplify heterogeneous storage management across local, network and cloud storage. It is unique in its ability to combine cross-platform data management with policy-based storage resource management tools.

With StrongLink, customers are able to simplify IT operations, reduce storage costs, and enforce data lifecycle management policies to meet global business continuity and disaster recovery needs. StrongLink immediately reduces OPEX by automating storage administration tasks, which increases global data access to users while reducing complexity for IT staff.

Eliminate storage silos: StrongLink is designed to simplify global data management across incompatible storage silos. The StrongLink global namespace creates a unified view across the entire storage environment regardless of storage vendor, platform, or protocol. Users access their data directly through standard file access and other methods and without interruption, even if by policy the files are migrated to other storage types, or to archive, tape, or cloud.

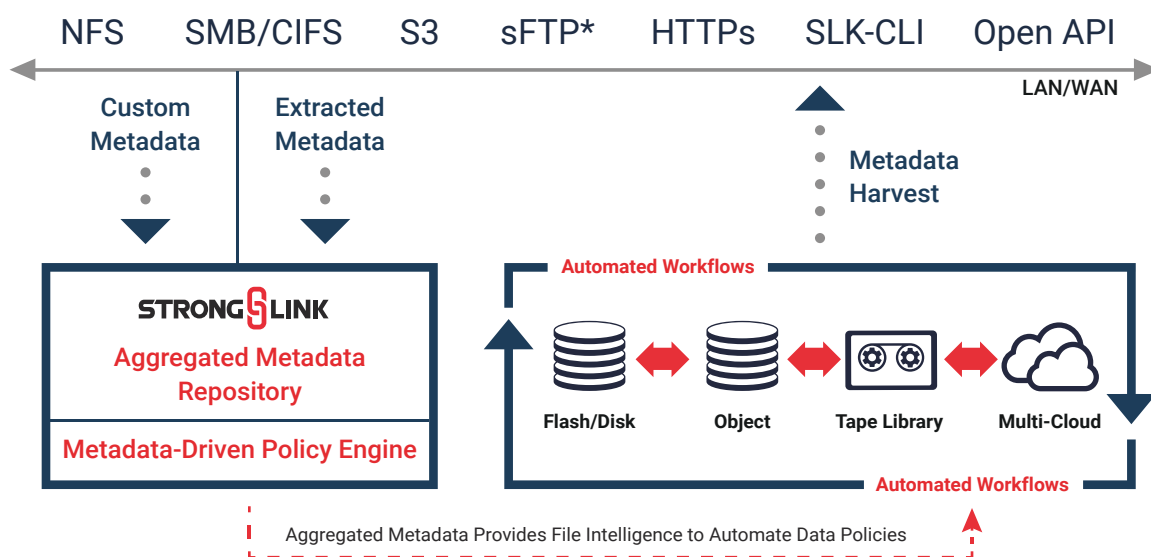
File migrations are automated between storage types with little or no disruption to access by users or applications. User-defined policies combined with auto data-classification ensure that files are always in the right storage location at the right time. StrongLink delivers a new level of simplicity for vendor-neutral tiering, archiving, and hybrid cloud use cases while ensuring policy-based storage optimization and workflow automation.

StrongLink does more than traditional HSMs enabling intelligent data movement. StrongLink does not use agents, stubs, or symlinks, but instead dynamically manages 'any-to-any' data movement directly between any connected storage type in the global namespace. This is not your grandfather's HSM, and doesn't suffer from traditional rehydration constraints seen in other legacy tiered architectures.

Unleash the power of metadata:

StrongLink automatically identifies and aggregates key information about your files in the form of metadata from multiple sources, including file system, application-specific, and user-created metadata. When used together, these otherwise incompatible metadata types feed StrongLink's policy engines, to provide users with the power to automate intelligent file actions.

And because StrongLink can manage your data across any storage type from any vendor, this power can be used globally across both on-prem and cloud storage for queries, reporting, file copy management, and to automate tasks such as data migrations, tiering and more. StrongLink creates a new level of usability for data management and protection to reduce IT staff workload and related costs.



Stronglink's autonomous engines powered by metadata

StrongLink is a high-performance scalable software solution that includes powerful policy engines and tools to simplify storage and data management.

⚙️ Dynamic Data Mover engine

Cross-platform migrations, tiering & archiving

⚙️ Workflow engine

Automated workflows based on schedule & triggers

⚙️ Visualization engine

Storage utilization & reporting

⚙️ Metadata engine

Extract, auto-classify, tag, organize & manage data

⚙️ Analytics engine

Data intelligence & derived insights

⚙️ Query engine

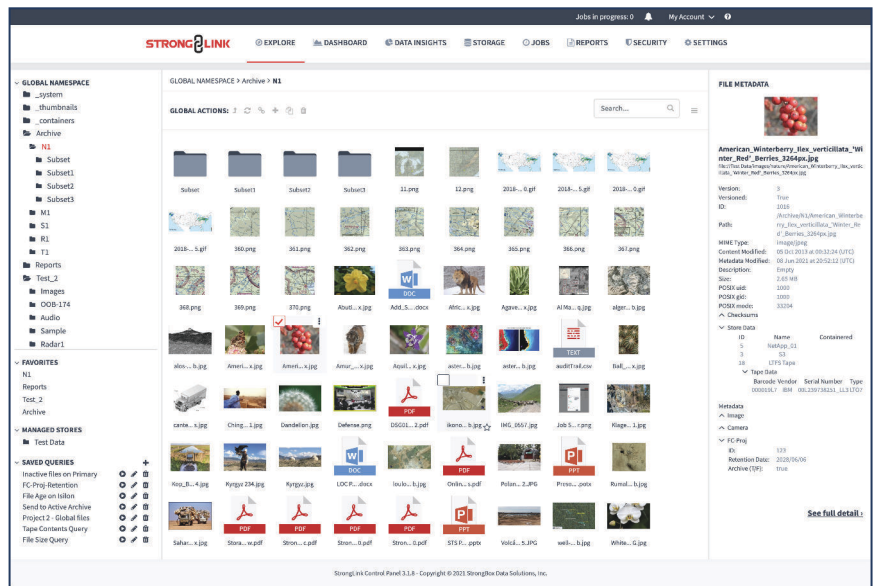
Global queries across all storage types, including tape and cloud.

Our customers use StrongLink to get global control of multi-vendor storage environments so they can automate tasks such as data migration & data lifecycle management, active archiving, technology refresh, storage tiering & hybrid cloud, plus tools for business continuity & disaster recovery.

Manage all of your data and storage resources from a single-pane-of-glass.

In addition to providing users global access to their data, StrongLink's browser-based Control Panel provides rich functionality for both users and administrators.

No client software is required for users to access the Control Panel. User roles and permissions are based upon customers' existing IT policies and authentication, such as Active Directory, LDAP, or with SAML.



StrongLink browser-based Control Panel. Users can also directly access data via standard multi-protocol file shares, and via the StrongLink CLI.

Enable smarter data management

StrongLink keeps track of files and file copies across all storage resources, including cloud. Administrators can perform file copy and migration policies without interrupting user access.

Users can perform global queries filtering on any combination of the many metadata sources. There are multiple powerful tools for queries, including via the simple Query wizard in the StrongLink Control Panel. Lower-level access for scripted workflows or application integration is made possible via the StrongLink CLI and/or via the open API.

StrongLink can be deployed both in and/or out of the data path.

StrongLink provides maximum control and flexibility: It can be deployed out of the data path for high IOPS use cases, or in the data path for maximum access security, virtualization, and control. Or as a seamless hybrid of both.

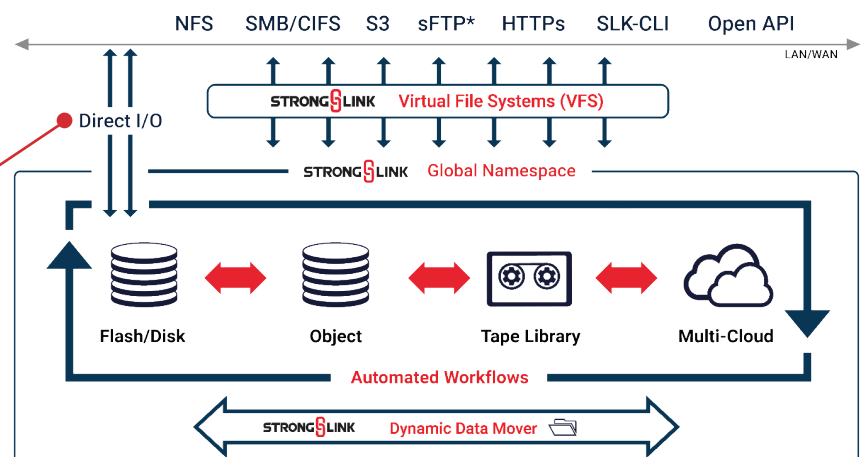
Users can access data directly from any storage including tape and cloud, without the need for dedicated disk cache. No agents needed on your storage. No stubs, or symlinks required. File naming and paths are maintained eliminating proprietary hooks found in other solutions that cause vendor lock in.

In the data path

- Enforced data stewardship
- Multi-protocol global namespace
- Transparent file migration
- Global search and reports
- User audit trails
- File Versioning
- Protection, preservation, privacy

Out of the data path

- Direct I/O to high IOPS storage
- Automated data movement
- File & metadata search
- File copy management



StrongLink accommodates both high-IOPS and high volume use cases with configurations connecting both in and/or out of the data path.

Self-healing, high availability architecture

StrongLink is deployed as a fully integrated software solution that can be installed on bare metal commodity hardware, on VMs, or in the Cloud. StrongLink is installed as a single package, with no dependencies on an OS or other external software components.

The StrongLink system can start as small as a single node for non-HA use cases, or as a minimum three-node Constellation for high availability configurations.

Unlike a traditional Linux cluster, the StrongLink Constellation is a self-healing architecture in which all nodes are identical, with no head node and no single point of failure. The StrongLink Metadata Database (MDDb) is continually replicated in real time across all available nodes for protection. In the event of a node failure, there is no loss of data or interruption of service in an HA configuration.

No cache required: StrongLink does not require a dedicated disk cache, since all customer data is managed in situ on customer storage, whether flash, disk, tape, or cloud.

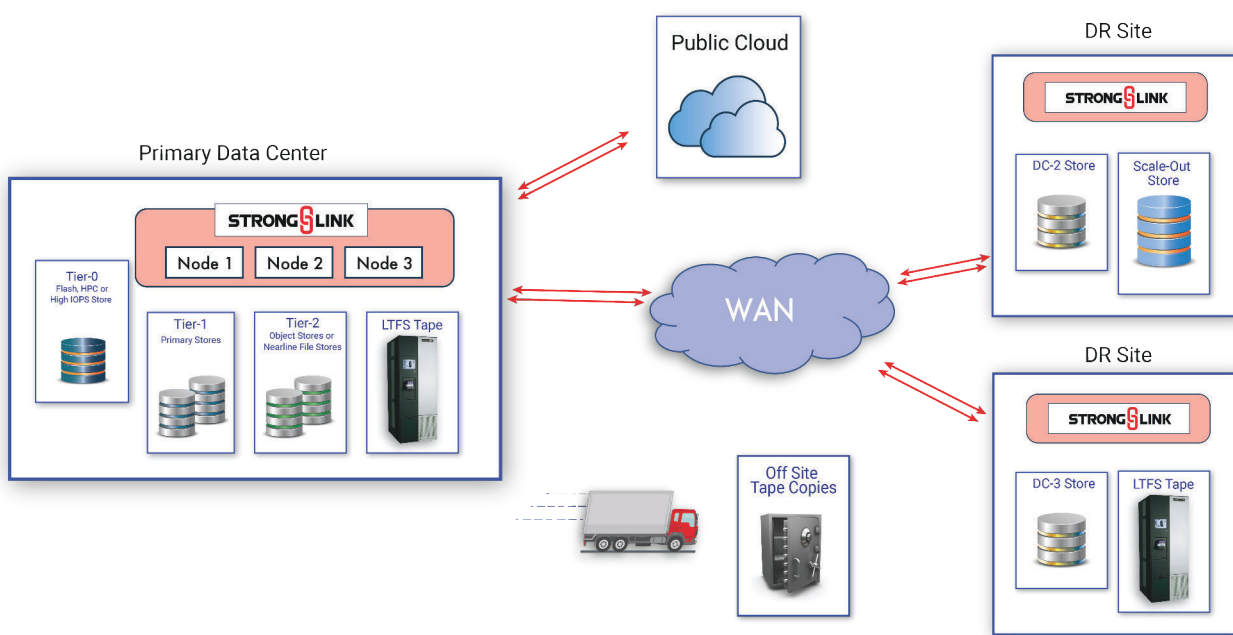
No scalability limits: StrongLink is designed with a true scale-out architecture that can be expanded seamlessly at any time by adding additional nodes to accommodate growing I/O throughput or data volume requirements. There is no upper limit on file count or throughput speed that a StrongLink Constellation can support, limited only by customer network bandwidth and storage performance.

StrongLink Constellation nodes operate together as a single distributed system, highly parallelized with internal load-balancing of all operations for maximum performance.

StrongLink Galaxy -- multi-site replication

StrongLink can be deployed in a multi-site configuration called a Galaxy, which ties together multiple StrongLink Constellations to provide global bi-directional replication for DR, collaboration and other use cases.

Metadata is replicated instantly between Constellations as changes occur, to ensure there is always an up-to-the-second copy of the complete Metadata Database (MDDb). Data replication will happen asynchronously according to policy for all data or selected subsets. Each site can be a different configuration, with different infrastructure, to allow for maximum flexibility in deployment.



StrongLink can be deployed in a Galaxy configuration, which enables bi-directional replication of data and metadata between multiple datacenters.

Some of the world's largest data environments rely on StrongLink to:

Remove Complexity

- Automatically bridge data silos
- Simplify IT tasks for multi-vendor storage
- Increase user productivity & collaboration

Reduce Costs

- Seamless tiering & archiving across any storage type
- Maximize storage utilization
- Data analytics to drive storage policies

Enforce Data Protection

- Manage file copies and placement
- Simplify business continuity & disaster recovery
- Metadata tagging for compliance, retention

Key StrongLink capabilities:

- ✓ Actionable data intelligence
- ✓ Aggregated metadata management
- ✓ Custom metadata tagging
- ✓ Global search
- ✓ Data lifecycle management
- ✓ Auto file verification
- ✓ User audit trails
- ✓ File versioning
- ✓ Roles-based access controls
- ✓ Support for LDAP, Active Directory, SAML
- ✓ Namespace Quotas
- ✓ Policy-based workflows
- ✓ Cross-platform global namespace
- ✓ Multi-protocol access to any storage (NFS, SMB, S3, HTTPs)
- ✓ Multi-vendor storage support for flash, disk, tape, and cloud
- ✓ Load balancing across heterogeneous storage
- ✓ Manage file copies across storage types
- ✓ High performance data movers
- ✓ No stubs, symlinks or agents
- ✓ Small-file optimization
- ✓ Licensed by performance needed, not tied to capacity or number of users
- ✓ Installs on commodity hardware or VMs
- ✓ Scale-out, self-healing HA architecture
- ✓ Open RESTful API
- ✓ StrongLink CLI
- ✓ Shell access for Admins
- ✓ Web-based Control Panel UI

Optional features:

- ✓ Direct support for tape libraries from any vendor, with open standard LTFS
- ✓ Bi-directional multi-site replication

To learn more about the StrongLink platform, please visit www.stronglink.com



General customer contact info
USA: +1 800-643-7148
EU: +49 7171 99800-0

Page 5

DSG01
info@StrongLink.com
www.StrongLink.com